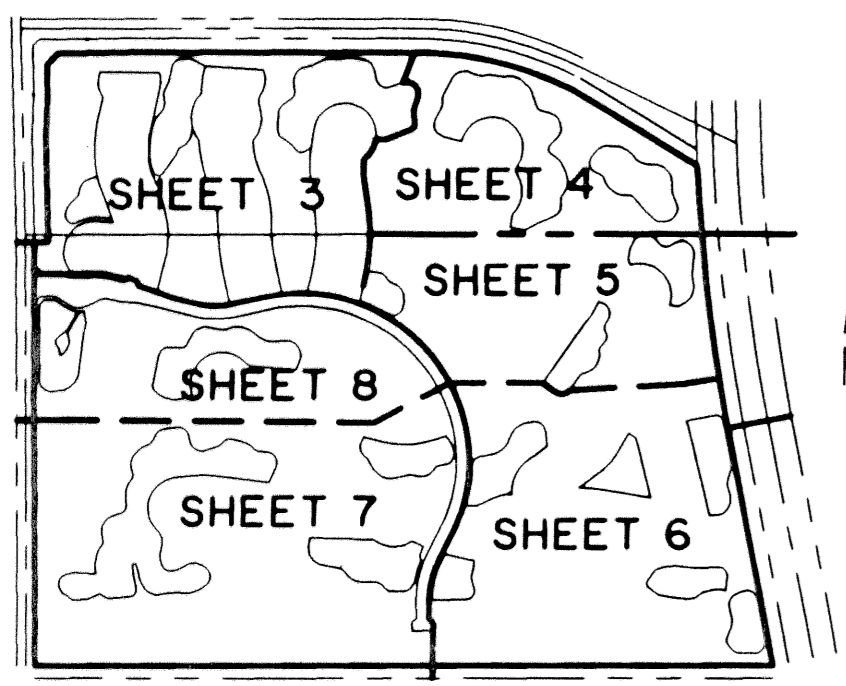


# DELRAY TRAINING CENTER-PLAT ONE

0664-001

63



A PLANNED UNIT DEVELOPMENT  
 BEING A REPLAT OF TRACTS 114 THROUGH 123, AND PORTIONS OF TRACTS 101-113, 124 & 125 OF SECTION 20, AND TRACTS 5 - 15, 18 - 28, 37 - 47, 50 - 61, & PORTIONS OF TRACTS 4, 16, 17, 29, 35, 36, 48, 49, & 62, OF SECTION 29, ACCORDING TO PALM BEACH FARMS CO. PLAT No. 1, AS RECORDED IN PLAT BOOK 2, PAGES 26 THROUGH 28, INCLUSIVE, PUBLIC RECORDS OF PALM BEACH COUNTY, FLORIDA; LYING IN SECTIONS 20 AND 29, TOWNSHIP 46 SOUTH, RANGE 42 EAST, PALM BEACH COUNTY, FLORIDA.  
 MAY, 1999

STATE OF FLORIDA  
 COUNTY OF PALM BEACH  
 THIS PLAT WAS FILED FOR RECORD AT \_\_\_\_\_  
 M. THIS DAY OF \_\_\_\_\_ 19\_\_\_\_  
 AND DULY RECORDED IN PLAT BOOK NO. \_\_\_\_\_  
 ON PAGE \_\_\_\_\_  
 DOROTHY H. WILKEN, CLERK OF THE CIRCUIT COURT  
 BY \_\_\_\_\_ D.C.

MATCH TO SHEET 3

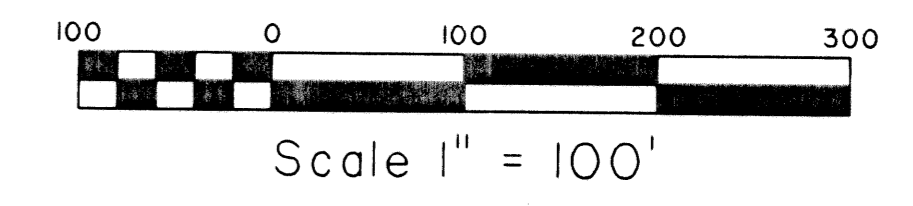
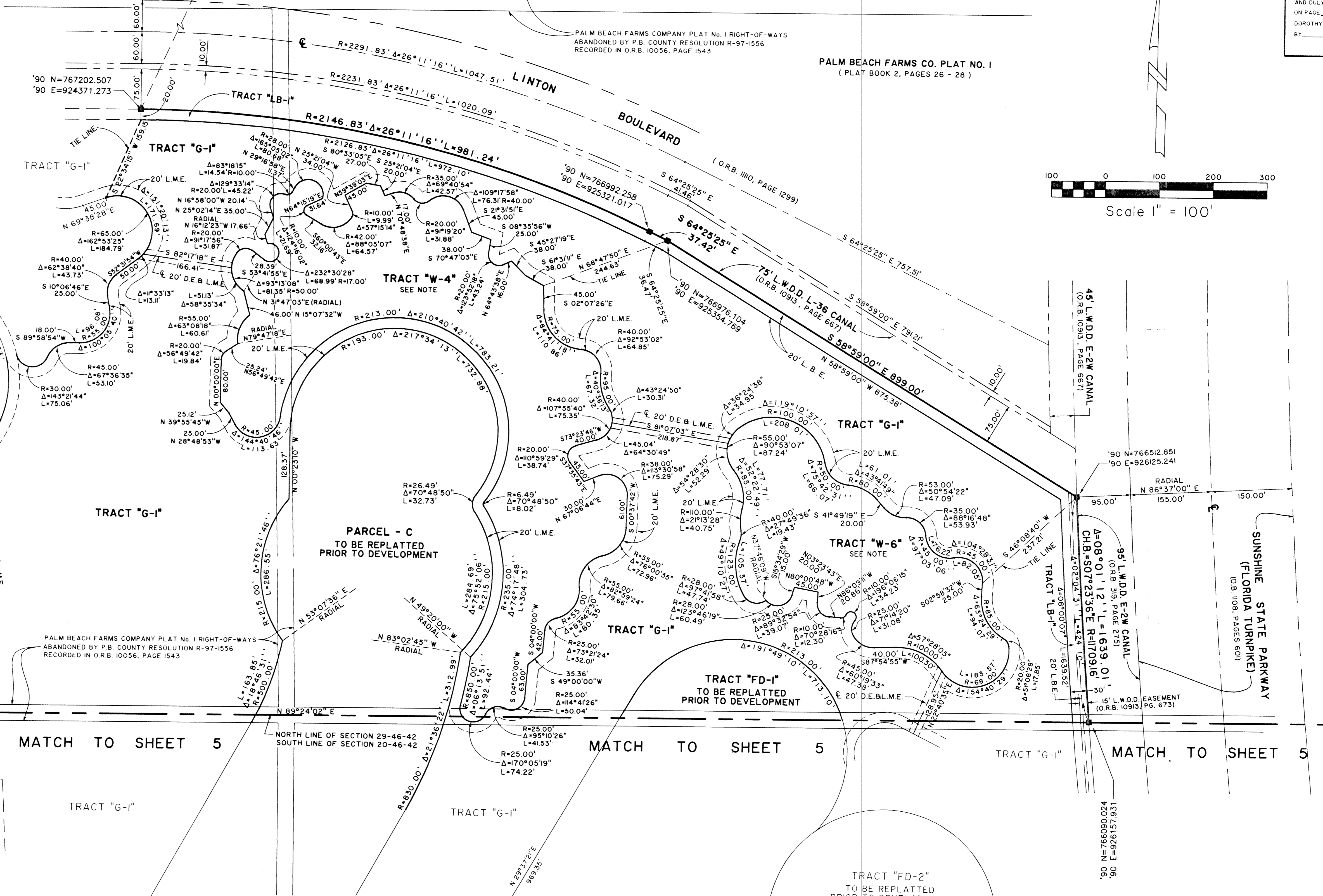
MATCH TO SHEET 3

MATCH TO SHEET 5

MATCH TO SHEET 5

MATCH TO SHEET 5

MATCH TO SHEET 5

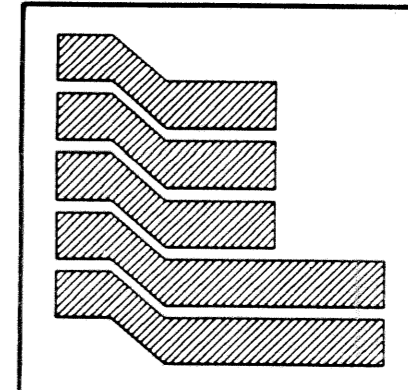


**COORDINATE NOTE:**  
 STATE PLANE COORDINATES SHOWN ARE GRID DATUM, NAD 83 1990 ADJUSTMENT, FLORIDA EAST ZONE, COORDINATE SYSTEM 1983 STATE PLANE, TRANSVERSE MERCATOR PROJECTION  
 LINEAR UNIT = US SURVEY FEET  
 ALL DISTANCES ARE GROUND  
 SCALE FACTOR = 1.000020427035  
 GROUND DISTANCE X SCALE FACTOR = GRID DISTANCE  
 BEARINGS AS SHOWN HERON ARE GRID DATUM, NAD 83 1990 ADJUSTMENT, FLORIDA EAST ZONE.

**NOTE:** WATER MANAGEMENT TRACTS "W-1" THRU "W-20" TO BE MAINTAINED BY THE MIZNER COUNTRY CLUB MASTER ASSOCIATION, INC. SUBJECT TO EXISTING LITTORAL ZONE RESTRICTIVE COVENANT AGREEMENT AS RECORDED IN O.R.B. 10619, PG. 1666, PUBLIC RECORDS OF PALM BEACH COUNTY, FLORIDA.

PLAT MAP # 2154  
 ZONING FUD  
 ZIP CODE 33498  
 TAZ 760760  
 PUB NAME Delray Training Center

SHEET 4 OF 8



**Landmark Surveying & Mapping Inc.**  
 1850 Forest Hill Boulevard  
 Ph. (561) 433-5405 Suite 100 W.P.B. Florida

DELRAY TRAINING CENTER-PLAT ONE

2395PL10